

## Gold Point SEZ

### Cultural Resources Class II Survey Results

Archaeological field work was undertaken at the Gold Point Solar Energy Zone (SEZ) in Esmeralda County, NV from May 8-12, 2012. The Class II sample survey was completed by SWCA Environmental Consultants (SWCA) under contract with the Bureau of Land Management (BLM). A total of 245 acres, approximately 5% of the SEZ, was surveyed in 26 discrete quadrats of approximately 10 acres each, selected on the basis of a stratified random sample across two distinct strata defined by soil types from Natural Resources Conservation Service (NRCS) soil survey data (recent alluvium and alluvial fans). The sample units were inventoried following the Nevada BLM cultural resource inventory guidelines and State Protocol Agreement between the Nevada BLM and the Nevada State Historic Preservation Office using pedestrian transects to visually inspect a maximum distance of 15 m on either side of the surveyor (30 m in total). Sites, features, unusual artifacts, disturbances and topographic features were recorded using a handheld Trimble GeoXT GPS unit.

The survey resulted in the recording of 3 new archaeological sites and 6 isolated finds. No previously recorded sites were located within the surveyed areas. SWCA recommended that all 3 sites, consisting of 2 prehistoric lithic scatters and 1 historic debris scatter, and 6 isolated finds (3 flakes, 1 obsidian projectile point fragment, 1 hole-in-top can, and 1 soldered-dot can) were not eligible for listing in the *National Register of Historic Places* (NRHP). BLM is responsible for determining the NRHP eligibility of all properties on BLM-administered lands consistent with 36CFR800.4.

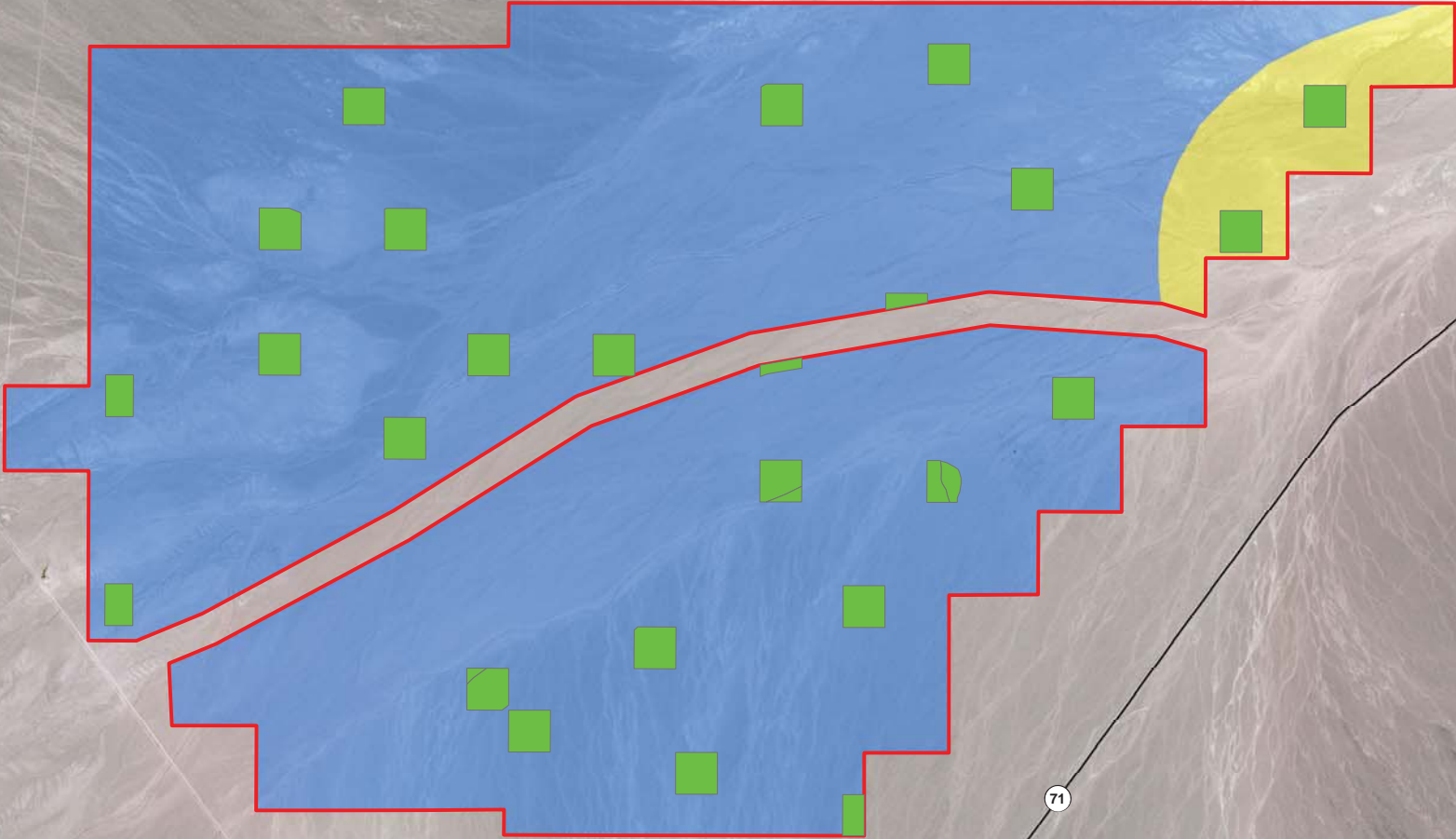
A cultural resource sensitivity map (Figure 1) of the Gold Point SEZ was developed by SWCA in conjunction with the completion of the Class II sample survey. Most of the SEZ is classified as low cultural resource sensitivity because few cultural resources were found; however, one area has been designated as medium sensitivity due to the presence of the largest of the 3 sites recorded and a number of drainages coming together concentrating surface water runoff.

A Class III inventory of the area of potential effect (APE) for a solar energy project will be required<sup>1</sup> prior to approving development within the SEZ.


---

<sup>1</sup> Alternative inventory strategies may be approved by the BLM according to the terms of the Solar Programmatic Agreement provided they are discussed during consultations with the State Historic Preservation Officer, Tribes, and any other consulting parties.

# Gold Point SEZ



Data Source: ESRI/ArcGIS Online,  
Microsoft Bing Maps, accessed January 2013  
Map Created: 1/11/2013

— Roadway	<b>Sensitivity</b>	<b>Cultural Sensitivity</b>	N 1:12,000  Nevada
■ Survey Area	■ Low	■ Medium	

0 500 1,000 2,000 Feet  
0 150 300 600 Meters