

Imperial East SEZ

Cultural Resources Class II Survey Results

Archaeological field work was undertaken at the Imperial East Solar Energy Zone (SEZ) in Imperial County, CA between May 1 and August 9, 2012. The Class II sample survey was completed by SWCA Environmental Consultants (SWCA) under contract with the Bureau of Land Management (BLM). A total of 288 acres, approximately 5% of the SEZ, was surveyed in 30 discrete quadrats ranging in size from 6.5 to 10 acres, selected on the basis of a stratified random sample across two areas differentiated on the basis of distance to the former shoreline of Lake Cahuilla. The sample units were inventoried to Class III standards using pedestrian transects spaced no further than 15 m apart; transect accuracy was maintained with the use of handheld Trimble GPS receivers and a topographic map.

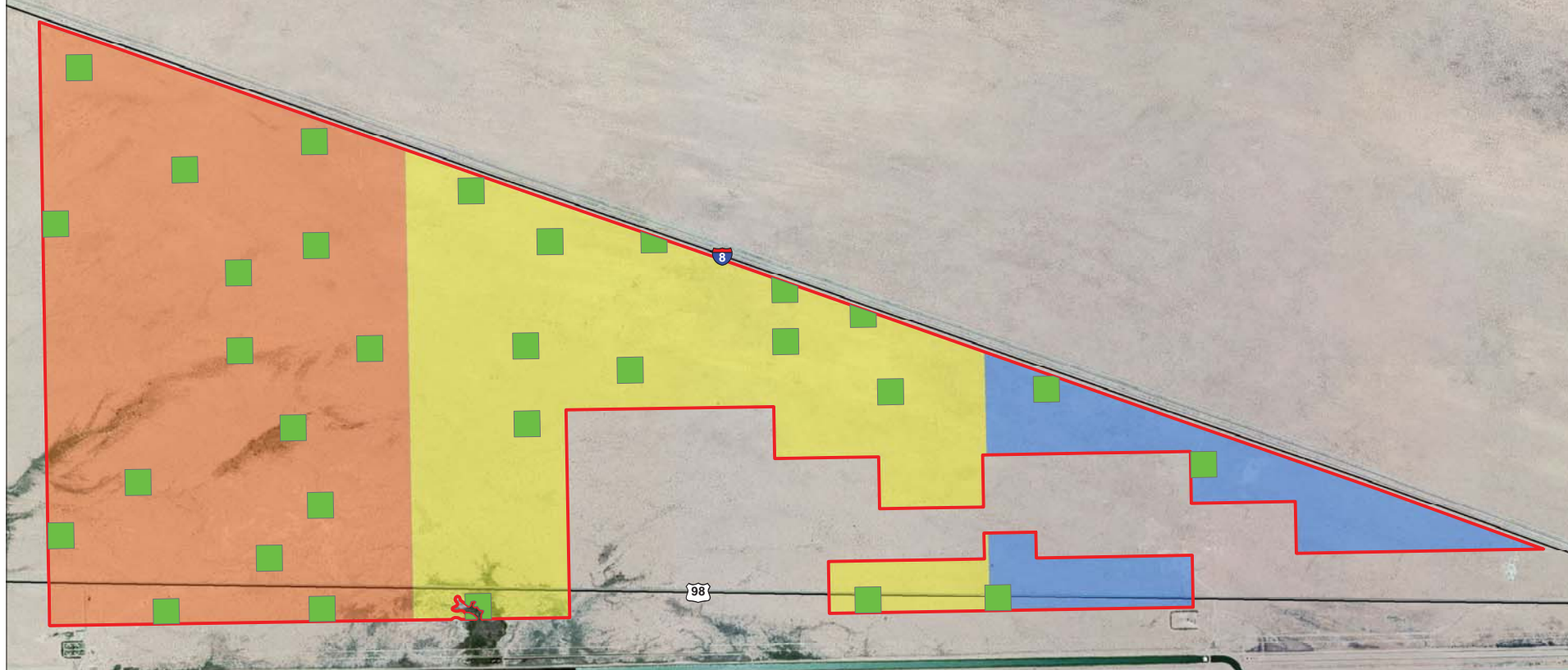
The survey resulted in the recording of 20 new archaeological sites (11 prehistoric and 9 historic), and 4 isolated finds. No previously recorded sites were located within the surveyed areas. SWCA recommended 10 prehistoric sites, consisting of artifact and ceramic scatters, as eligible for listing in the *National Register of Historic Places* (NRHP). SWCA recommended that 8 historic sites, 1 prehistoric site, and 4 isolated finds were not eligible for listing in the NRHP, and that insufficient information was available to recommend NRHP-eligibility for 1 site (a historic road segment that required additional archival research and pedestrian survey beyond the SEZ boundary in order to determine significance). BLM is responsible for determining the NRHP eligibility of all properties on BLM-administered lands consistent with 36CFR800.4.

A cultural resource sensitivity map (Figure 1) of the Imperial East SEZ was developed by SWCA in conjunction with the completion of the Class II sample survey. The sensitivity zones were based on the locations of the prehistoric sites recommended as eligible for listing in the NRHP. The pattern is thought to be associated with proximity to the ancient shoreline of Lake Cahuilla, west of the SEZ.

A Class III inventory of the area of potential effect (APE) for a solar energy project will be required¹ prior to approving development within the SEZ.

¹ Alternative inventory strategies may be approved by the BLM according to the terms of the Solar Programmatic Agreement provided they are discussed during consultations with the State Historic Preservation Officer, Tribes, and any other consulting parties.

Imperial East SEZ



Data Source: ESRI/ArcGIS Online,
Microsoft Bing Maps, accessed January 2013
Map Created: 11/7/2012

Roadway	Survey Area	Solar Energy Zone	Cultural Sensitivity		1:17,000		
Sensitivity	Low	Medium					
0 500 1,000 2,000 Feet		0 150 300 600 Meters					