



Resource Areas Addressed in the Solar Programmatic EIS

- Acoustic Environment
- Air Quality
- Climate Change
- Cultural Resources
- Ecological Resources
 - Vegetation
 - Aquatic Biota
 - Wildlife
 - Special Status Species
- Environmental Justice
- Geology and Soil Resources
- Hazardous Materials and Waste
- Health and Safety
- Lands and Realty
- Military and Civilian Aviation
- Minerals
- Paleontological Resources
- Rangeland Resources
 - Livestock Grazing
 - Wild Horses and Burros
- Recreation
- Socioeconomics
- Specially Designated Areas and Lands with Wilderness Characteristics
- Transportation
- Tribal Interests
- Visual Resources
- Water Resources
- Wildland Fire



Figure from Solar Programmatic EIS Visual Resources Analysis



Please provide your
comment on the Draft
Solar Programmatic EIS,
at:
[https://eplanning.blm.gov
/eplanning-
ui/project/2022371/510](https://eplanning.blm.gov/eplanning-ui/project/2022371/510)



Design Features

- Design features are project requirements that have been incorporated into all the alternatives to avoid, minimize, or compensate for adverse impacts.
- The proposed design features in the Draft Solar Programmatic EIS would update the design features established through the Western Solar Plan that are currently in effect
- Design features are presented in Appendix B of the Programmatic EIS, and address all of the resource areas evaluated. They include requirements for specific plans to address resource-specific impacts.

Bird and Bat Conservation Strategy (includes Nesting Bird Management Plan)
Decommissioning and Site Reclamation Plan
Dust Abatement Plan
Hazardous Materials and Waste Management Plan
Health and Safety Plan
Lighting Plan
Spill Prevention and Emergency Response Plan
Stormwater Pollution Prevention Plan
Threatened and endangered species protection plan
Transportation Plan
Traffic Management Plan
Vegetation/Weed Management Plan
Worker Education and Awareness Plan (WEAP)

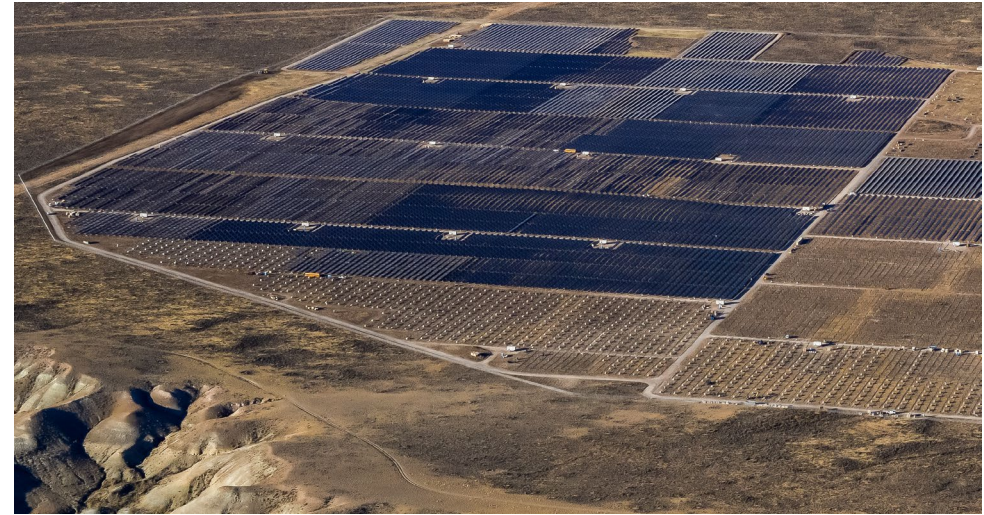
Individual Plans Required for Projects through Updated Design Features





Requirements for Further Environmental Analysis

- This Programmatic EIS:
 - Builds a consistent framework to have solar proposals avoid areas with high levels of resource conflicts
 - Identifies areas with fewer known resource conflicts
 - **Does not** affirmatively designate particular areas as suitable for development
 - **Does not** approve any solar project
- Project-specific screening and detailed analysis will be required to:
 - Ensure consistency with the applicable land use plan
 - Conduct detailed environmental review
 - Consider Areas of Special Concern, resource-related impacts, public concerns, and proximity to important resources



Sweetwater Solar Facility, Wyoming. Source: BLM

Even in areas identified as available for application, BLM may not approve solar applications.





Requirements for Further Environmental Analysis



BLM Restoration Landscapes

- Areas of Special Concern were identified based on input from the National Park Service (NPS), U.S. Fish and Wildlife Service (USFWS), cooperating agencies, and BLM subject matter experts
- Appendix H presents 4 categories of Areas of Special Concern: BLM Restoration Landscapes, Oil and Gas Lease Areas, Big Game Use Areas, and NPS Areas of Special Concern
- Developers would propose avoidance and/or other mitigation measures for projects that intersect with these areas

