

## Amargosa Valley SEZ

### Cultural Resources Class II Survey Results

Archaeological field work was undertaken at the Amargosa Valley Solar Energy Zone (SEZ) in Nye County, NV from May 8-12, 2012. The Class II sample survey was completed by SWCA Environmental Consultants (SWCA) under contract with the Bureau of Land Management (BLM). A total of 438 acres, approximately 5% of the SEZ, was surveyed in 11 discrete quadrats of approximately 40 acres each, selected on the basis of a simple random sampling strategy. The sample units were inventoried following the Nevada BLM cultural resource inventory guidelines and State Protocol Agreement between the Nevada BLM and the Nevada State Historic Preservation Office using pedestrian transects to visually inspect a maximum distance of 15 m on either side of the surveyor (30 m in total). Sites, features, unusual artifacts, disturbances and topographic features were recorded using a handheld Trimble GeoXT GPS unit.

The survey resulted in the recording of 1 isolated find and one segment of a previously identified archaeological site, related to the Tonopah and Tidewater Railroad (T&T). SWCA recommended that the isolated find (1 flake) was not eligible for listing in the *National Register of Historic Places* (NRHP). The T&T railroad grade segment and associated artifact scatter were recommended as non-contributing elements to the previously recorded NRHP-eligible T&T. The T&T, also known as the Nevada Short Line and the Borax Railroad, was nominated for listing in the NRHP for its role in the development of mining communities in the Amargosa and Mojave Deserts between 1907 and 1940. The BLM is responsible for determining the NRHP eligibility of all properties on BLM-administered lands consistent with 36CFR800.4.

A cultural resource sensitivity map (Figure 1) of the Amargosa Valley SEZ was developed by SWCA in conjunction with the completion of the Class II sample survey. The SEZ is classified as low cultural resource sensitivity due to the near absence of cultural resources.

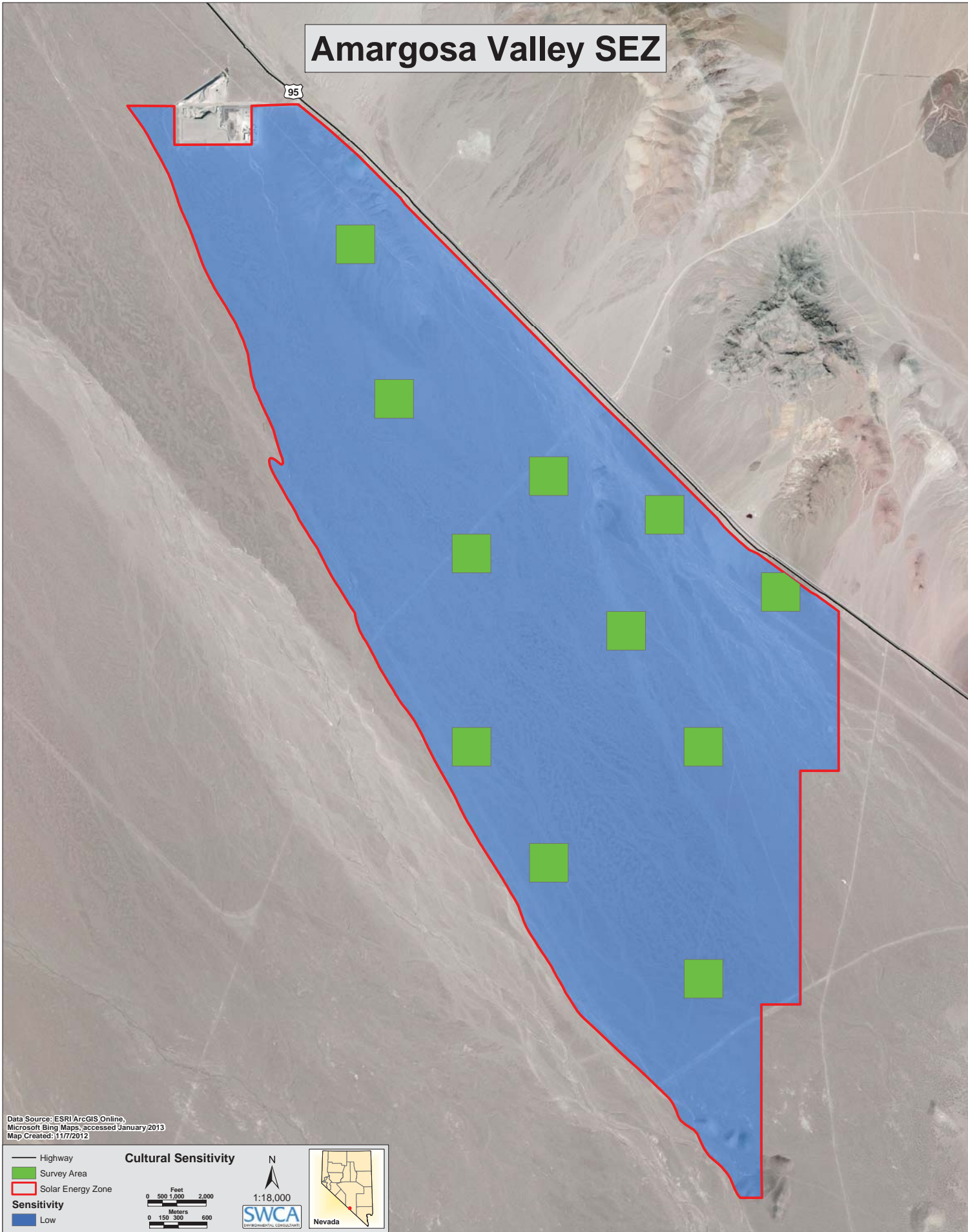
A Class III inventory of the area of potential effect (APE) for a solar energy project will be required<sup>1</sup> prior to approving development within the SEZ.

---

<sup>1</sup> Alternative inventory strategies may be approved by the BLM according to the terms of the Solar Programmatic Agreement provided they are discussed during consultations with the State Historic Preservation Officer, Tribes, and any other consulting parties.

# Amargosa Valley SEZ

95



Data Source: ESRI/ArcGIS Online,  
Microsoft Bing Maps, accessed January 2013  
Map Created: 1/17/2012

**Cultural Sensitivity**

- Highway
- Survey Area
- Solar Energy Zone

**Sensitivity**

- Low

0 500 1,000 2,000 Feet  
0 150 300 600 Meters

1:18,000

SWCA  
SOUTHWESTERN WATER CONSERVATION AUTHORITY

Nevada