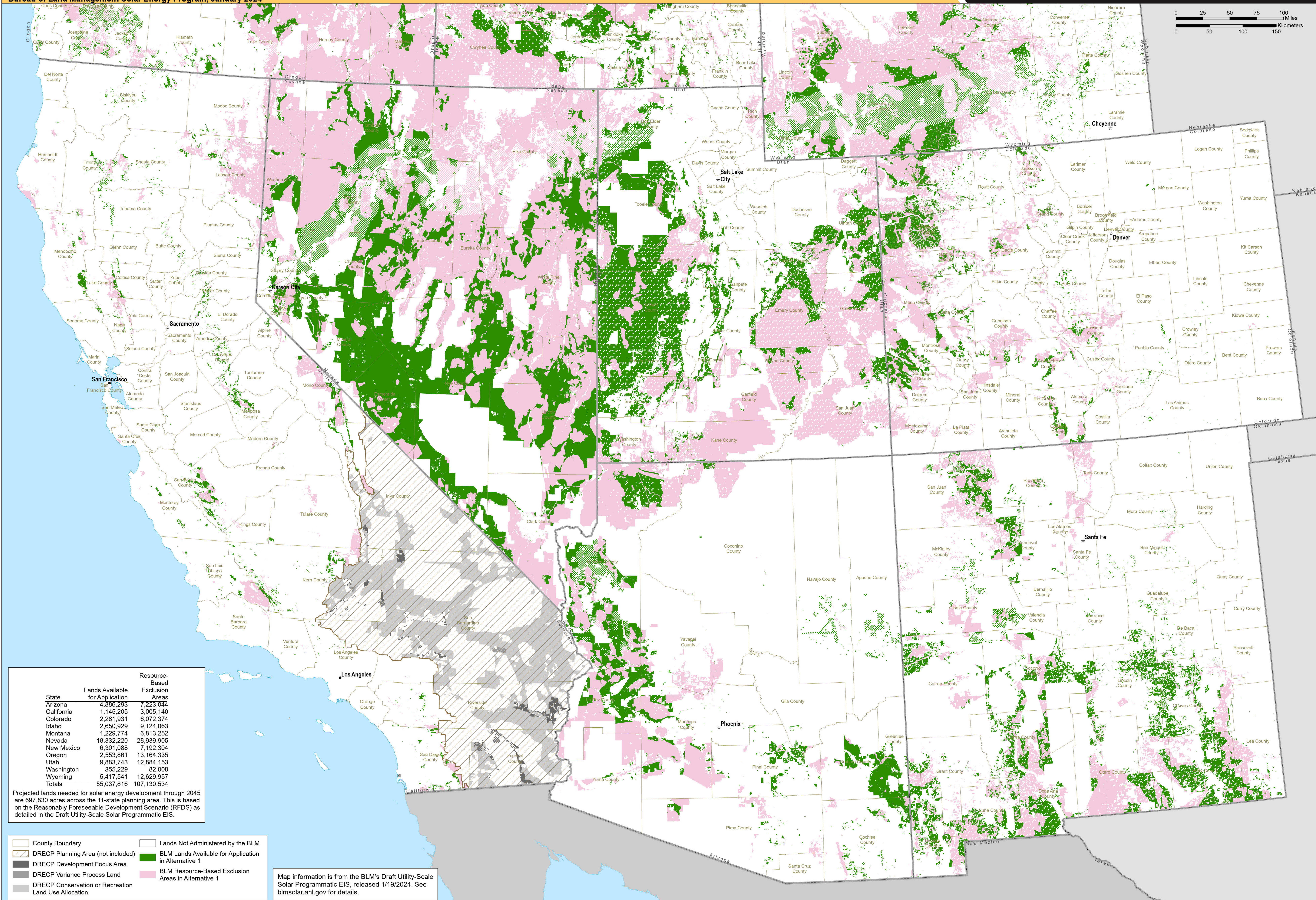


# BLM-Administered Lands Excluded and Available for Application in the Six Southern States Under Alternative 1

Property of the U.S. Department of the Interior. Prepared in support of the Bureau of Land Management Solar Energy Program, January 2024



**Argonne**  
NATIONAL LABORATORY



State	Lands Available for Application	Resource-Based Exclusion Areas
Arizona	4,886,293	7,223,044
California	1,145,205	3,005,140
Colorado	2,281,931	6,072,374
Idaho	2,650,929	9,124,063
Montana	1,229,774	6,813,252
Nevada	18,332,220	28,939,905
New Mexico	6,301,088	7,192,304
Oregon	2,553,861	13,164,335
Utah	9,883,743	12,884,153
Washington	355,229	82,008
Wyoming	5,417,541	12,629,957
<b>Totals</b>	<b>55,037,816</b>	<b>107,130,534</b>

Projected lands needed for solar energy development through 2045 are 697,830 acres across the 11-state planning area. This is based on the Reasonably Foreseeable Development Scenario (RFDS) as detailed in the Draft Utility-Scale Solar Programmatic EIS.

County Boundary  
 DRECP Planning Area (not included)  
 DRECP Development Focus Area  
 DRECP Variance Process Land  
 DRECP Conservation or Recreation Land Use Allocation  
 Lands Not Administered by the BLM  
 BLM Lands Available for Application in Alternative 1  
 BLM Resource-Based Exclusion Areas in Alternative 1

Map information is from the BLM's Draft Utility-Scale Solar Programmatic EIS, released 1/19/2024. See [blmsolar.anl.gov](https://blmsolar.anl.gov) for details.