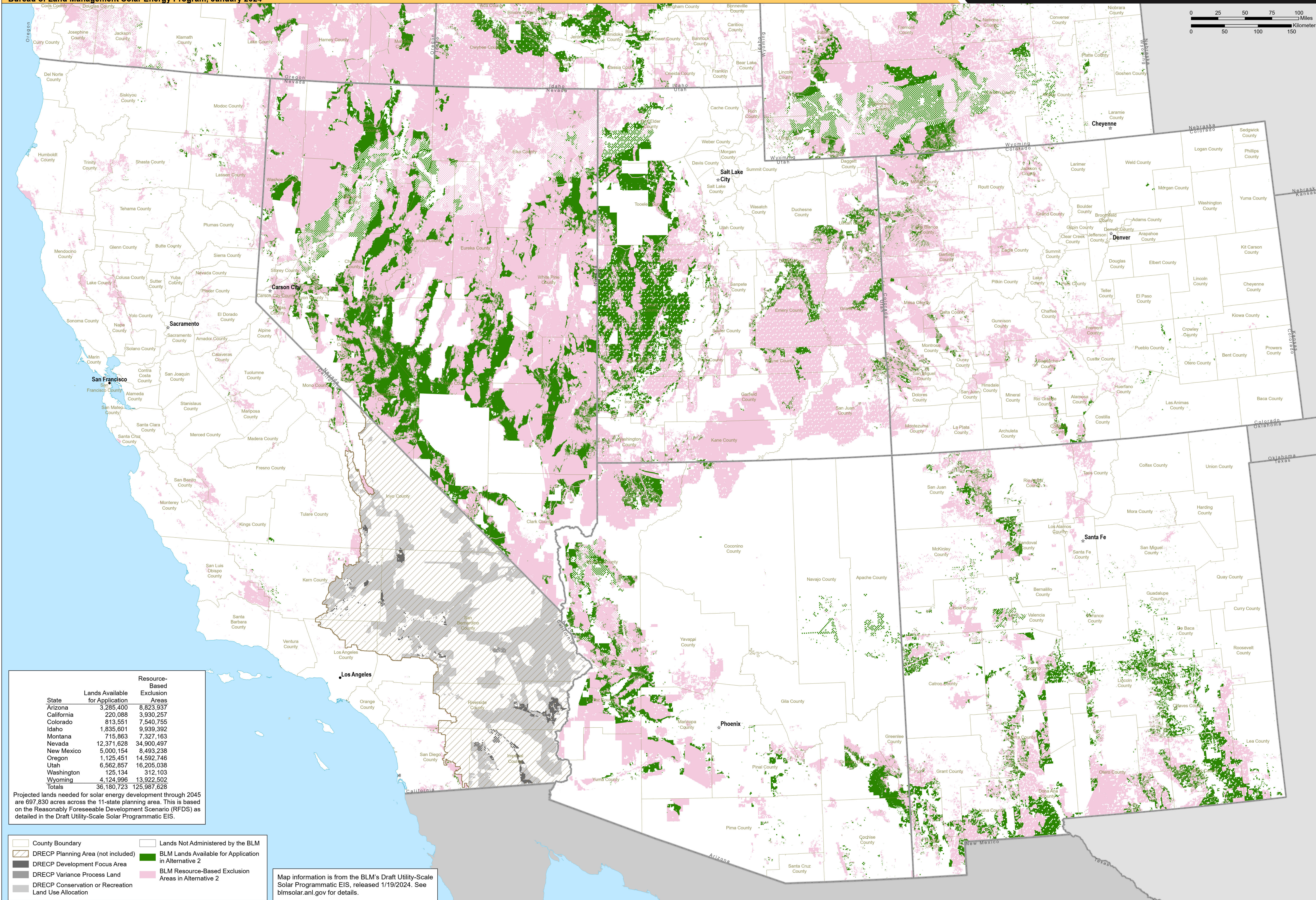


BLM-Administered Lands Excluded and Available for Application in the Six Southern States Under Alternative 2

Property of the U.S. Department of the Interior. Prepared in support of the Bureau of Land Management Solar Energy Program, January 2024



Argonne
NATIONAL LABORATORY



State	Lands Available for Application	Resource-Based Exclusion Areas
Arizona	3,285,400	8,823,937
California	220,088	3,930,257
Colorado	813,551	7,540,755
Idaho	1,835,601	9,939,392
Montana	715,863	7,327,163
Nevada	12,371,628	34,900,497
New Mexico	5,000,154	8,493,238
Oregon	1,125,451	14,592,746
Utah	6,562,857	16,205,038
Washington	125,134	312,103
Wyoming	4,124,996	13,922,502
Totals	36,180,723	125,987,628

Projected lands needed for solar energy development through 2045 are 697,830 acres across the 11-state planning area. This is based on the Reasonably Foreseeable Development Scenario (RFDS) as detailed in the Draft Utility-Scale Solar Programmatic EIS.

- County Boundary
- DRECP Planning Area (not included)
- DRECP Development Focus Area
- DRECP Variance Process Land
- DRECP Conservation or Recreation Land Use Allocation
- Lands Not Administered by the BLM
- BLM Lands Available for Application in Alternative 2
- BLM Resource-Based Exclusion Areas in Alternative 2

Map information is from the BLM's Draft Utility-Scale Solar Programmatic EIS, released 1/19/2024. See blmsolar.anl.gov for details.