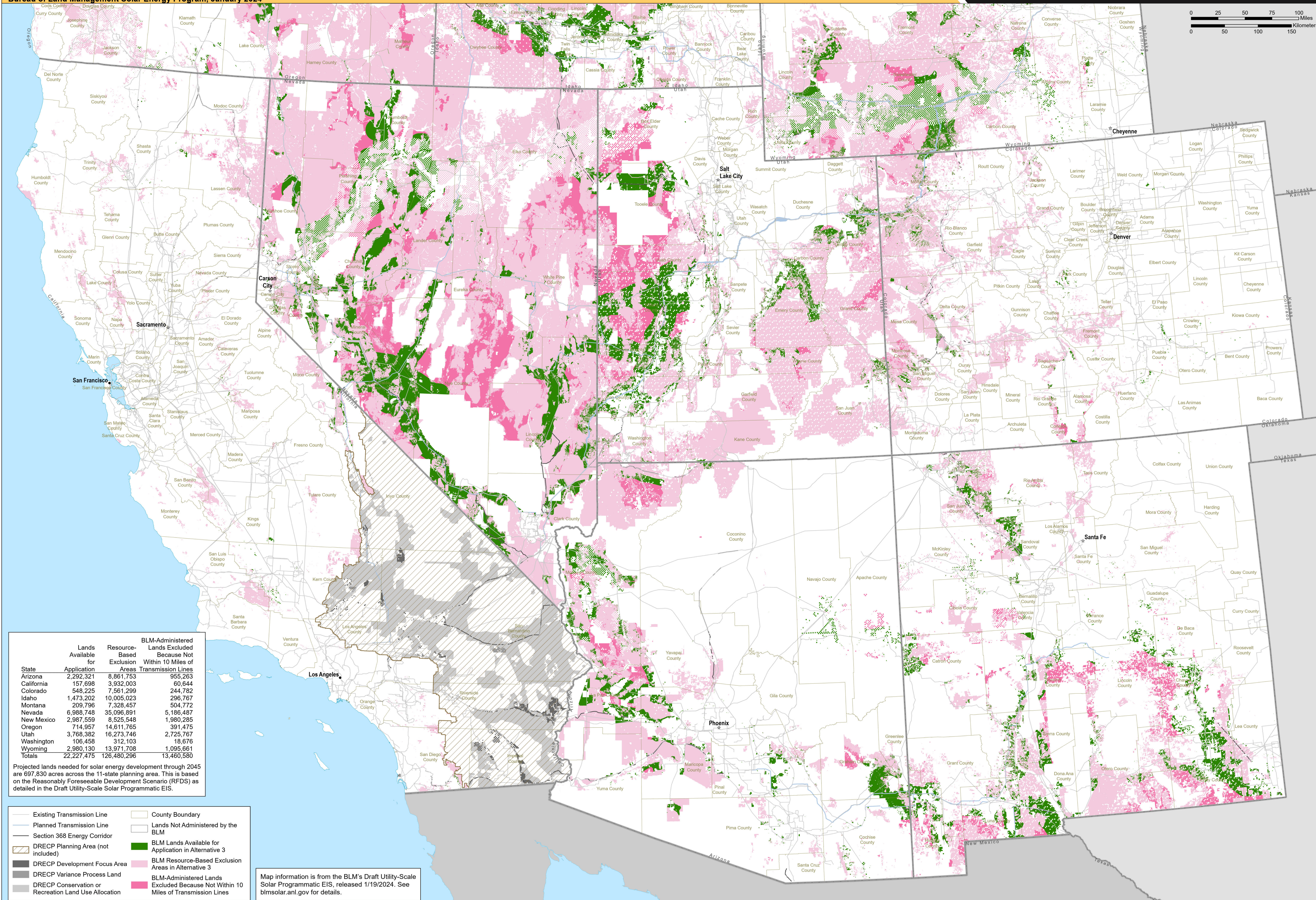


# BLM-Administered Lands Excluded and Available for Application in the Six Southern States Under Alternative 3

Property of the U.S. Department of the Interior. Prepared in support of the Bureau of Land Management Solar Energy Program, January 2024



**Argonne**  
NATIONAL LABORATORY



State	Lands Available for Application	Resource-Based Exclusion Areas	BLM-Administered Lands Excluded Because Not Within 10 Miles of Transmission Lines
Arizona	2,292,321	8,861,753	955,263
California	157,698	3,932,003	60,644
Colorado	548,225	7,561,299	244,782
Idaho	1,473,202	10,005,023	296,767
Montana	209,796	7,323,457	504,772
Nevada	6,988,748	35,096,891	5,186,487
New Mexico	2,987,559	8,525,548	1,980,285
Oregon	714,957	14,611,765	391,475
Utah	3,768,382	16,273,746	2,725,767
Washington	106,458	312,103	18,676
Wyoming	2,980,130	13,971,708	1,095,661
<b>Totals</b>	<b>22,227,475</b>	<b>126,480,296</b>	<b>13,460,580</b>

Projected lands needed for solar energy development through 2045 are 697,830 acres across the 11-state planning area. This is based on the Reasonably Foreseeable Development Scenario (RFDS) as detailed in the Draft Utility-Scale Solar Programmatic EIS.

- Existing Transmission Line
- Planned Transmission Line
- Section 368 Energy Corridor
- DRECP Planning Area (not included)
- DRECP Development Focus Area
- DRECP Variance Process Land
- DRECP Conservation or Recreation Land Use Allocation
- County Boundary
- Lands Not Administered by the BLM
- BLM Lands Available for Application in Alternative 3
- BLM Resource-Based Exclusion Areas in Alternative 3
- BLM-Administered Lands Excluded Because Not Within 10 Miles of Transmission Lines

Map information is from the BLM's Draft Utility-Scale Solar Programmatic EIS, released 1/19/2024. See [blmsolar.anl.gov](https://blmsolar.anl.gov) for details.