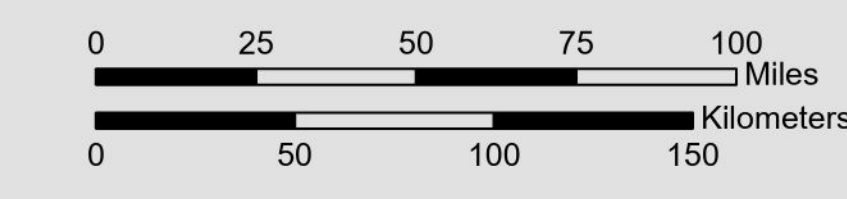
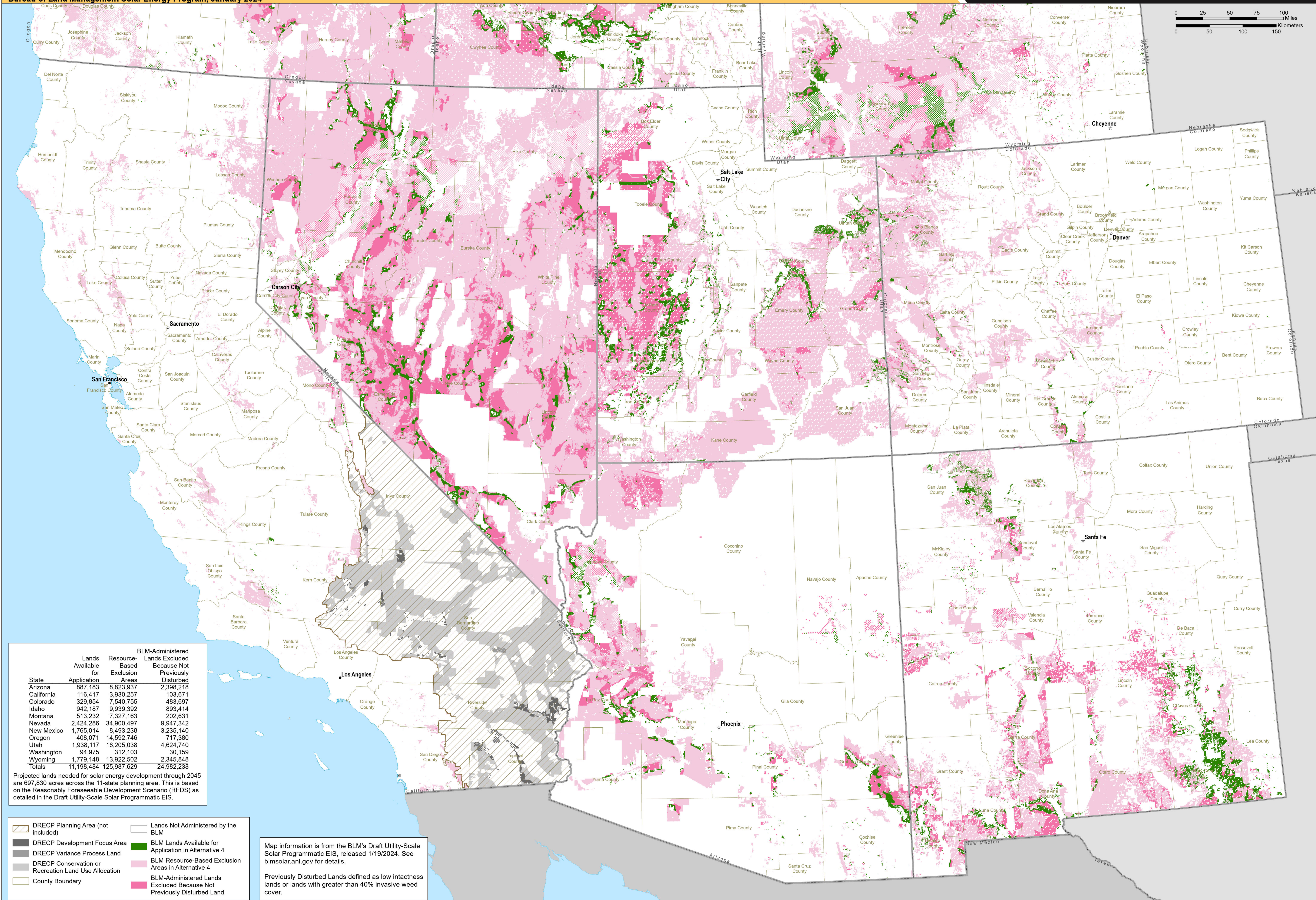


# BLM-Administered Lands Excluded and Available for Application in the Six Southern States Under Alternative 4

Property of the U.S. Department of the Interior. Prepared in support of the Bureau of Land Management Solar Energy Program, January 2024



**Argonne**  
NATIONAL LABORATORY



State	Lands Available for Application	Resource-Based Exclusion Areas	BLM-Administered Lands Excluded Because Not Previously Disturbed
Arizona	887,183	8,823,937	2,398,218
California	116,417	3,930,257	103,671
Colorado	329,854	7,540,755	483,697
Idaho	942,187	9,939,392	893,414
Montana	513,232	7,327,163	202,631
Nevada	2,424,286	34,900,497	9,947,342
New Mexico	1,765,014	8,493,238	3,235,140
Oregon	408,071	14,592,746	717,390
Utah	1,938,117	16,205,038	4,624,740
Washington	94,975	312,103	30,159
Wyoming	1,779,148	13,922,502	2,345,848
<b>Totals</b>	<b>11,198,484</b>	<b>125,987,629</b>	<b>24,982,238</b>

Projected lands needed for solar energy development through 2045 are 697,830 acres across the 11-state planning area. This is based on the Reasonably Foreseeable Development Scenario (RFDS) as detailed in the Draft Utility-Scale Solar Programmatic EIS.

- DRECP Planning Area (not included)
- DRECP Development Focus Area
- DRECP Variance Process Land
- DRECP Conservation or Recreation Land Use Allocation
- County Boundary
- Lands Not Administered by the BLM
- BLM Lands Available for Application in Alternative 4
- BLM Resource-Based Exclusion Areas in Alternative 4
- BLM-Administered Lands Excluded Because Not Previously Disturbed Land

Map information is from the BLM's Draft Utility-Scale Solar Programmatic EIS, released 1/19/2024. See [blmsolar.anl.gov](https://blmsolar.anl.gov) for details.

Previously Disturbed Lands defined as low intactness lands or lands with greater than 40% invasive weed cover.