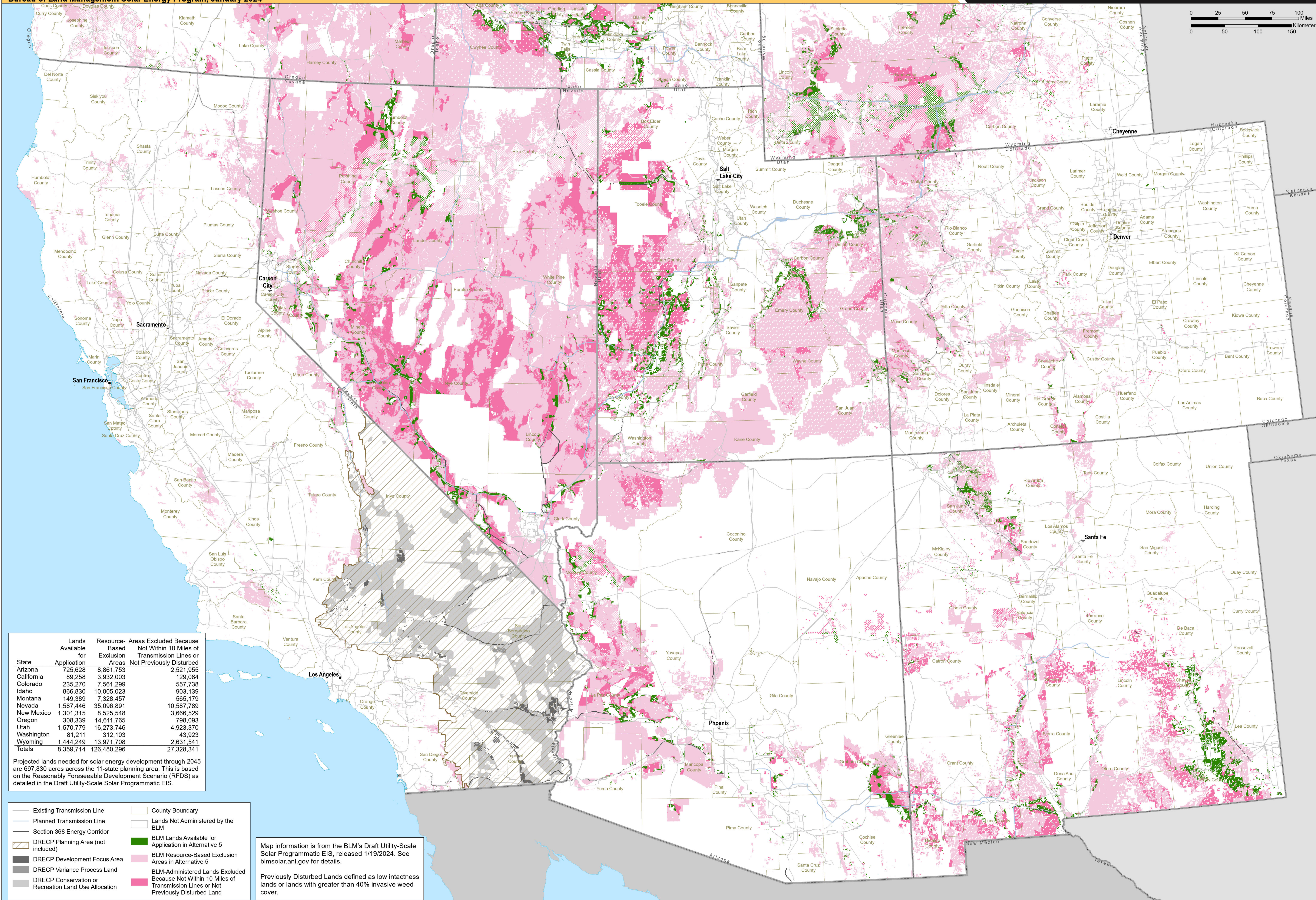


BLM-Administered Lands Excluded and Available for Application in the Six Southern States Under Alternative 5

Property of the U.S. Department of the Interior. Prepared in support of the Bureau of Land Management Solar Energy Program, January 2024



State	Lands Available for Application	Resource-Based Exclusion Areas	Areas Excluded Because Not Within 10 Miles of Transmission Lines or Not Previously Disturbed
Arizona	725,628	8,861,753	2,521,955
California	89,258	3,932,003	129,084
Colorado	235,270	7,561,299	557,738
Idaho	866,830	10,005,023	903,139
Montana	149,389	7,328,457	565,179
Nevada	1,587,446	35,096,891	10,587,769
New Mexico	1,301,315	8,525,548	3,666,529
Oregon	308,339	14,611,765	798,093
Utah	1,570,779	16,273,746	4,923,370
Washington	81,211	312,103	43,923
Wyoming	1,444,249	13,971,708	2,631,541
Totals	8,359,714	126,480,296	27,328,341

Projected lands needed for solar energy development through 2045 are 697,830 acres across the 11-state planning area. This is based on the Reasonably Foreseeable Development Scenario (RFDS) as detailed in the Draft Utility-Scale Solar Programmatic EIS.

- Existing Transmission Line
- Planned Transmission Line
- Section 368 Energy Corridor
- DRECP Planning Area (not included)
- DRECP Development Focus Area
- DRECP Variance Process Land
- DRECP Conservation or Recreation Land Use Allocation
- County Boundary
- Lands Not Administered by the BLM
- BLM Lands Available for Application in Alternative 5
- BLM Resource-Based Exclusion Areas in Alternative 5
- BLM-Administered Lands Excluded Because Not Within 10 Miles of Transmission Lines or Not Previously Disturbed Land

Map information is from the BLM's Draft Utility-Scale Solar Programmatic EIS, released 1/19/2024. See blmsolar.anl.gov for details.

Previously Disturbed Lands defined as low intactness lands or lands with greater than 40% invasive weed cover.