

# BLM-Administered Lands Excluded and Available for Application in the Five Northern States Under No Action Alternative

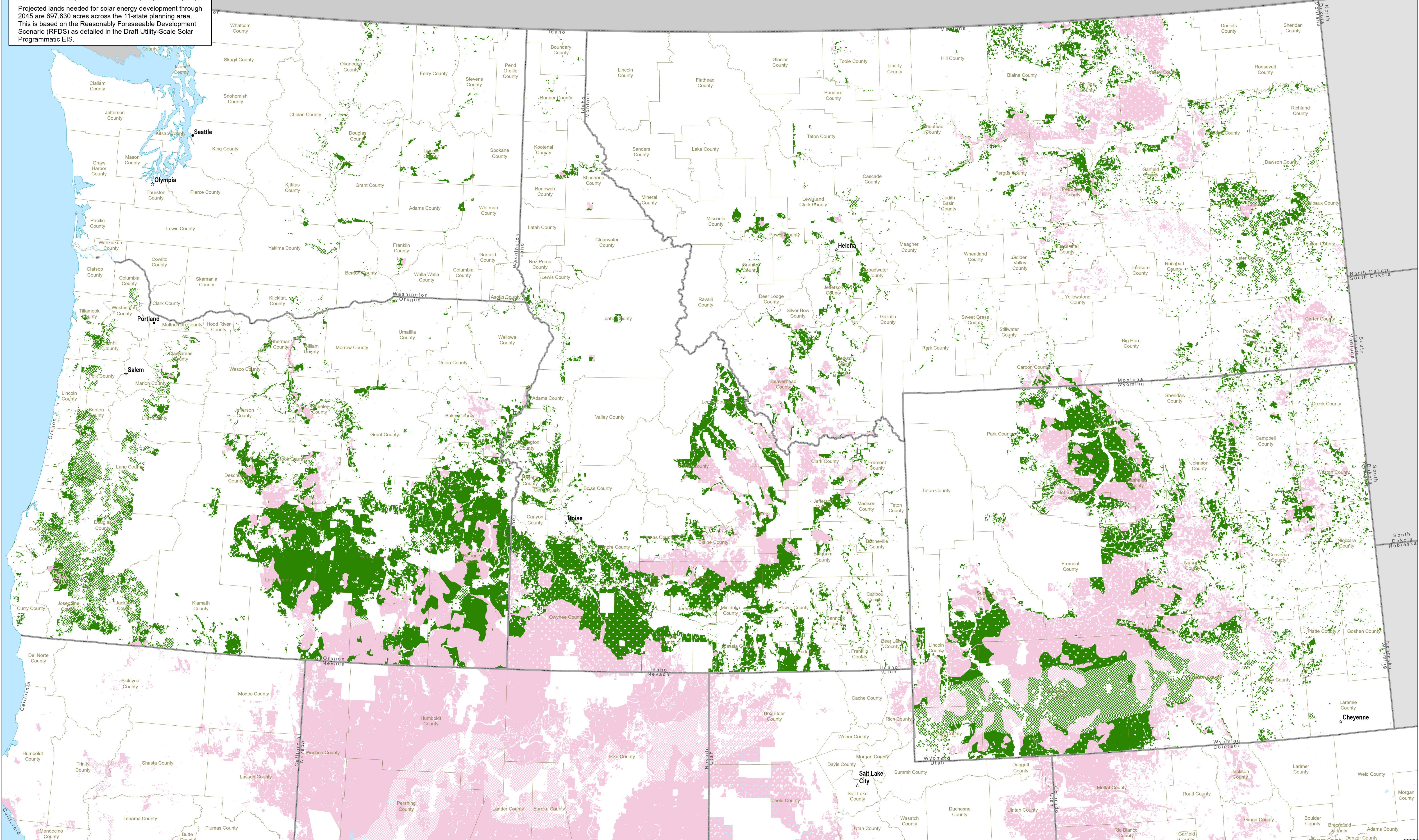
Property of the U.S. Department of the Interior. Prepared in support of the Bureau of Land Management Solar Energy Program, January 2024



State	Priority Areas	Lands Available for Application (Variance Lands in Six-State Area)	Exclusion Areas
Arizona	198,948	2,861,429	9,048,960
California		117,933	4,032,412
Colorado	22,038	135,548	8,196,717
Idaho		7,055,043	4,719,949
Montana		4,011,886	4,031,139
Nevada	61,834	6,863,590	40,346,702
New Mexico	29,716	3,915,370	9,548,306
Oregon		10,965,383	4,752,813
Utah	17,659	1,815,742	20,934,494
Washington		412,062	25,175
Wyoming		9,139,769	8,907,717
Totals	330,195	47,293,756	114,544,384

- County Boundary
- DRECP Planning Area (not included)
- DRECP Development Focus Area
- DRECP Variance Process Land
- DRECP Conservation or Recreation Land Use Allocation
- Lands Not Administered by the BLM
- Priority Areas
- BLM Lands Available for Application
- BLM Lands Available for Application Under Variance Process
- BLM Exclusion Areas

Map information is from the BLM's Draft Utility-Scale Solar Programmatic EIS, released 1/19/2024. See [blmsolar.anl.gov](https://blmsolar.anl.gov) for details.



Projected lands needed for solar energy development through 2045 are 697,830 acres across the 11-state planning area. This is based on the Reasonably Foreseeable Development Scenario (RFDS) as detailed in the Draft Utility-Scale Solar Programmatic EIS.