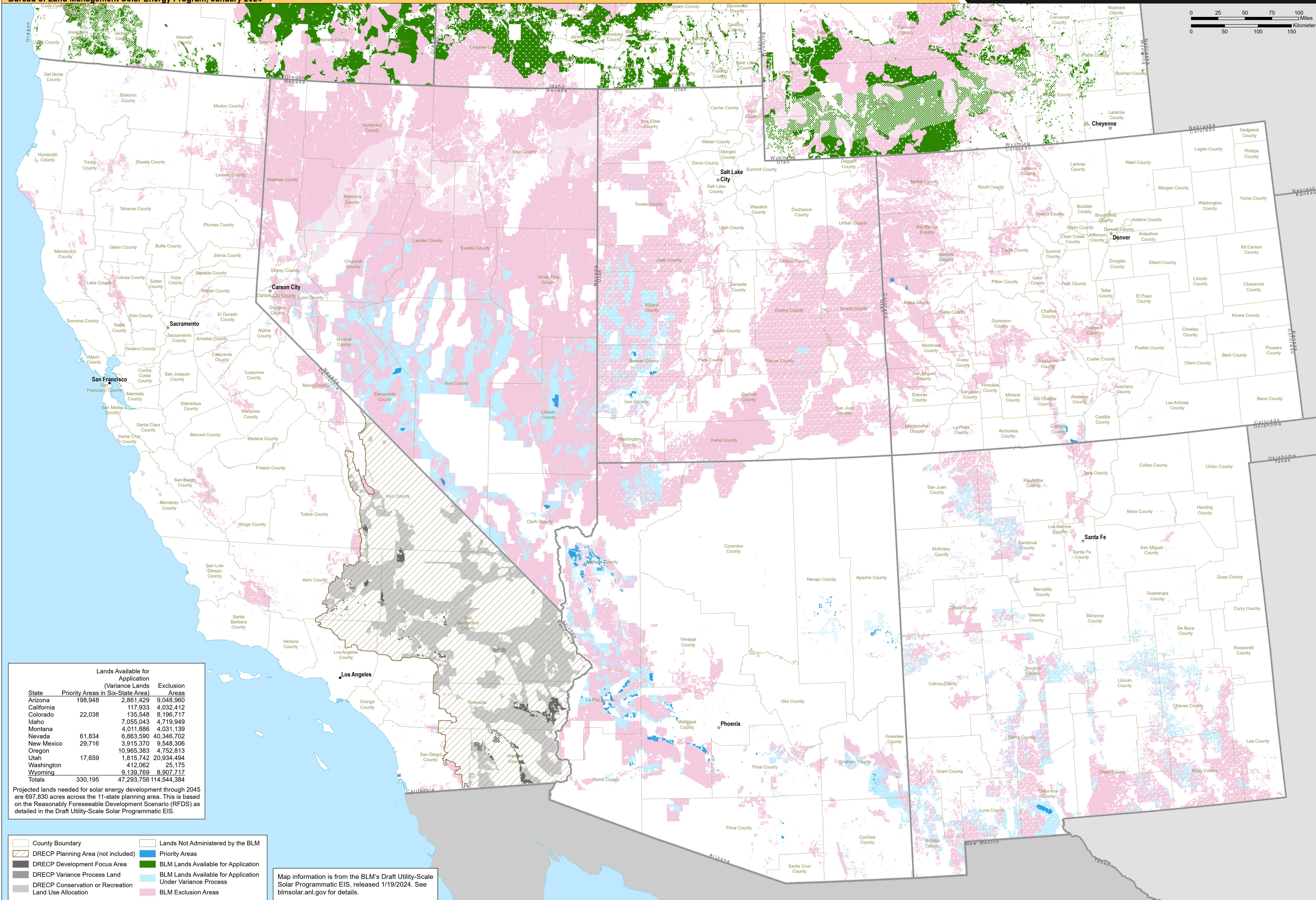


BLM-Administered Lands Excluded and Available for Application in the Six Southern States Under No Action Alternative

Property of the U.S. Department of the Interior. Prepared in support of the Bureau of Land Management Solar Energy Program, January 2024



State	Priority Areas in Six-State Area	Lands Available for Application (Variance Lands)	Exclusion Areas
Arizona	198,948	2,861,429	9,048,960
California		117,933	4,032,412
Colorado	22,038	135,548	8,196,717
Idaho		7,055,043	4,719,949
Montana		4,011,886	4,031,139
Nevada	61,834	6,863,590	40,346,702
New Mexico	29,716	3,915,370	9,548,306
Oregon		10,965,383	4,752,813
Utah	17,659	1,815,742	20,934,494
Washington		412,062	25,175
Wyoming		9,139,769	8,907,717
Totals	330,195	47,293,756	114,544,384

Projected lands needed for solar energy development through 2045 are 697,830 acres across the 11-state planning area. This is based on the Reasonably Foreseeable Development Scenario (RFDS) as detailed in the Draft Utility-Scale Solar Programmatic EIS.

County Boundary	Lands Not Administered by the BLM
DRECP Planning Area (not included)	Priority Areas
DRECP Development Focus Area	BLM Lands Available for Application
DRECP Variance Process Land	BLM Lands Available for Application Under Variance Process
DRECP Conservation or Recreation Land Use Allocation	BLM Exclusion Areas

Map information is from the BLM's Draft Utility-Scale Solar Programmatic EIS, released 1/19/2024. See blmsolar.anl.gov for details.