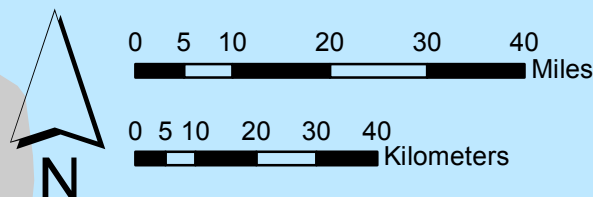
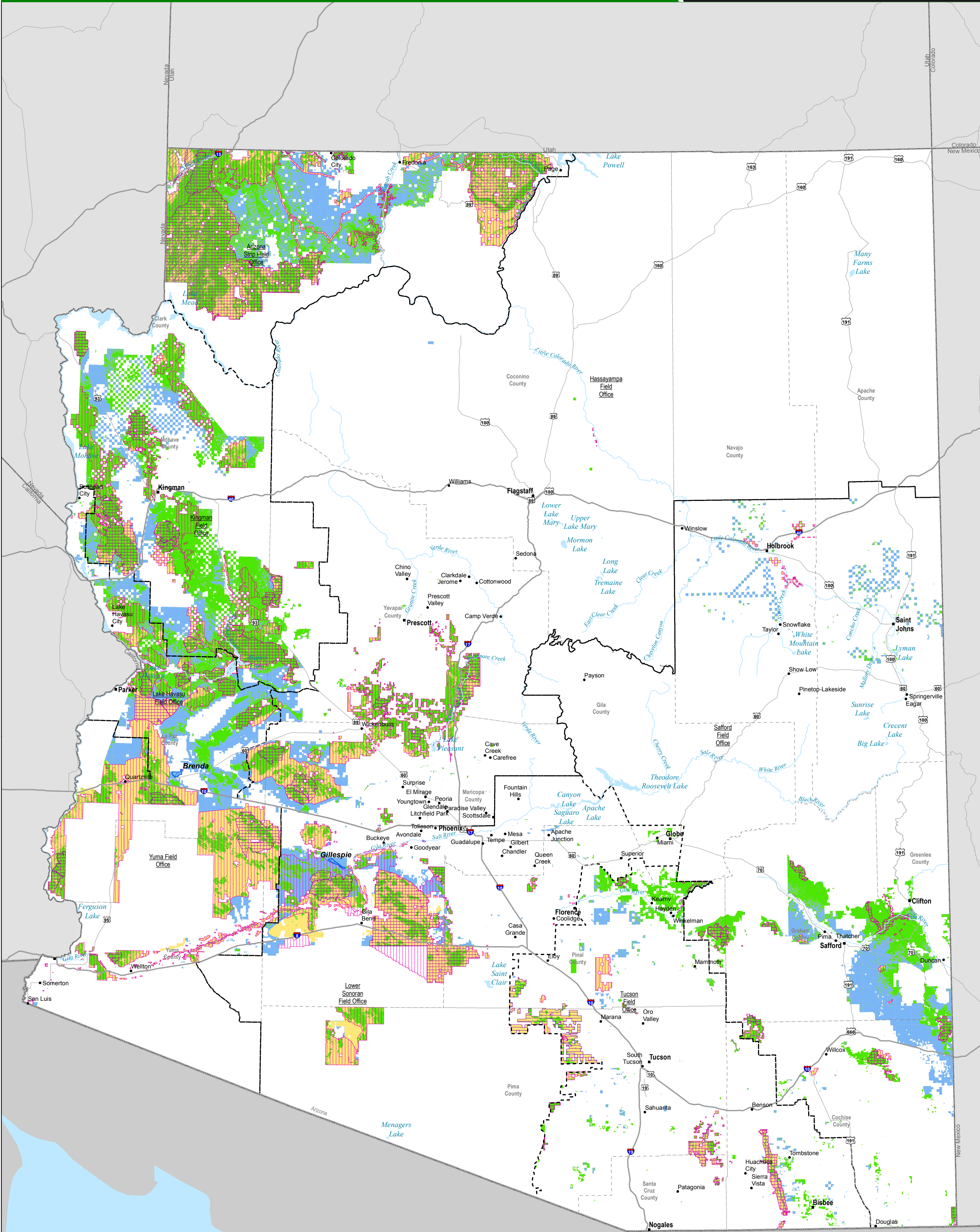
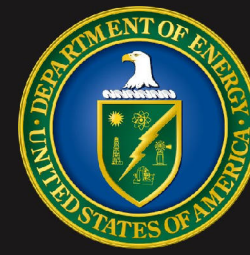


Lands Excluded from BLM's Solar Development Program in Arizona

July 2013

Property of the U.S. Department of the Interior. Prepared in support of the Bureau of Land Management Solar Energy Program, as presented in the Approved Resource Management Plan Amendments/Record of Decision (ROD) for Solar Energy Development in Six Southwestern States (ROD), published in October 2012.



- Habitat Exclusions (See Note 1)
- Land Use Exclusions (See Note 2)
- NLCS Exclusions (See Note 3)
- Physical Exclusions (See Note 4)
- Variance Areas (See Note 5)
- BLM-Administered Lands (See Note 6)
- Developable Areas within Solar Energy Zones

NOTES*

- Habitat Exclusions** consist of FWS Critical Habitat for Fauna and Flora (4).
- Land Use Exclusions** consist of Areas of Critical Environmental Concern (3), National Historic and Natural Landmarks (22), New Exclusion between Supplement and Final Solar PEIS (32), Previously Proposed SEZ Lands Excluded (29), ROW Avoidance and Exclusion Areas (10 and 11), Special Recreation Management Areas and Recreational Facilities (6), and Visual Resource Management Class I or II (19), and lands with Wilderness Characteristics (5).
- National Landscape Conservation Area Exclusions** consist of National Conservation Areas (21), National Monuments (21), National Trails (21), Wilderness Areas (21), and Wilderness Study Areas (21).
- Physical Exclusions** consist of Lands with Slopes Greater Than 5% (1).
- Variance Areas** consist of BLM-Administered Lands which are not subject to exclusions.
- BLM-Administered Lands** are extracted from the BLM's Surface Management Agency Database, 9/14/2009.

*Numbers in parentheses correspond to Table A-2 in the Record of Decision.

MEXICO