

Avian Knowledge Network & Avian-Solar CWG/ ASWG

Michael Fitzgibbon, Leo Salas,
Rob Serafini
Point Blue Conservation Science
Aug 16, 2017



Point Blue Conservation Science

Conserving wildlife and ecosystems through science & partnerships

- Founded in 1965 as Point Reyes Bird Observatory
- 160+ staff and seasonal scientists
- 2017 budget: \$14 million
- Provide technology solutions that support AKN nodes for data management, curation, visualization and analysis.
- Working in all 4 Flyways across Western Hemisphere

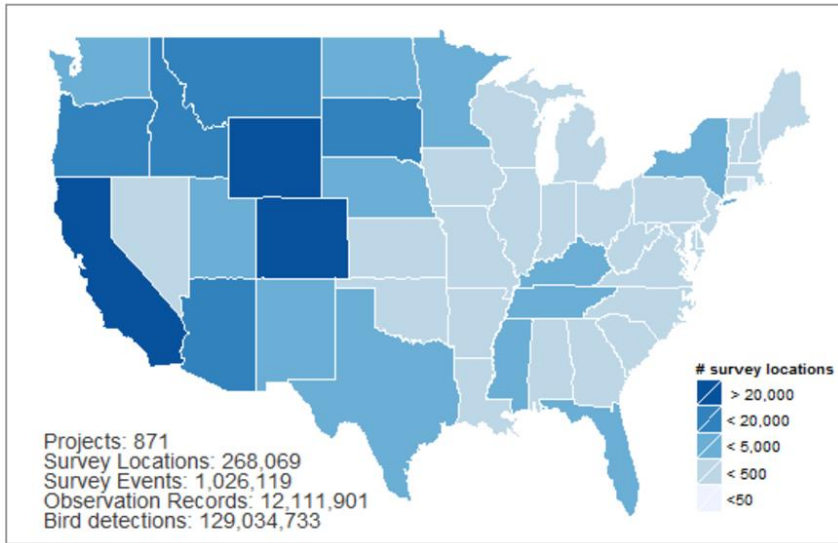


Data needs for CWG & ASWG

- Survey data collection by partners:
 - Baseline information
 - Avian impacts (mortality)
- Data management & analysis needed to answer questions like:
 - How do avian impacts compare between sites?
 - What is the regional incident and magnitude of mortality?
 - Where are the migratory flyways to inform future site selection?
 - How can we better avoid, minimize and mitigate avian impacts in the future?



DATA FROM THE AKN



Midwest Coordinated Bird
Monitoring Partnership

A **partnership** supporting the **conservation of birds and their habitats** based on data, adaptive management, and best available science. AKN partners improve awareness, purpose, access to, and use of **data and tools at multiple scales.**



Avian Knowledge Network – National Node

A Node for the Council for the Conservation of Migratory Birds

[Home](#) [About](#) [Explore Data](#) [Enter Data](#) [Help](#) [Resources](#)



The goal of the Avian Knowledge Network (AKN) National Node is to support further enabling and growing a network of people, data, and technology management, and research across organizational boundaries and spatial origins and background of the National Node, visit the [About](#) page.

- Project for The Council for the Conservation of Migratory Birds
- Funders: BLM, BOEM, FHWA, USFS, NPS, FWS, DoD



Discover Best Available Bird Monitoring Protocols

[Read more](#)



Upload, Enter and Manage Your Data

Upload and manage your data in bulk through the AKN.

[Read more](#)



Use AKN Tools with AKN Data to Explore Patterns and Trends

Use other AKN tools with AKN data to explore patterns and trends, generate simple visualizations, or apply advanced analyses to field

[Social](#)

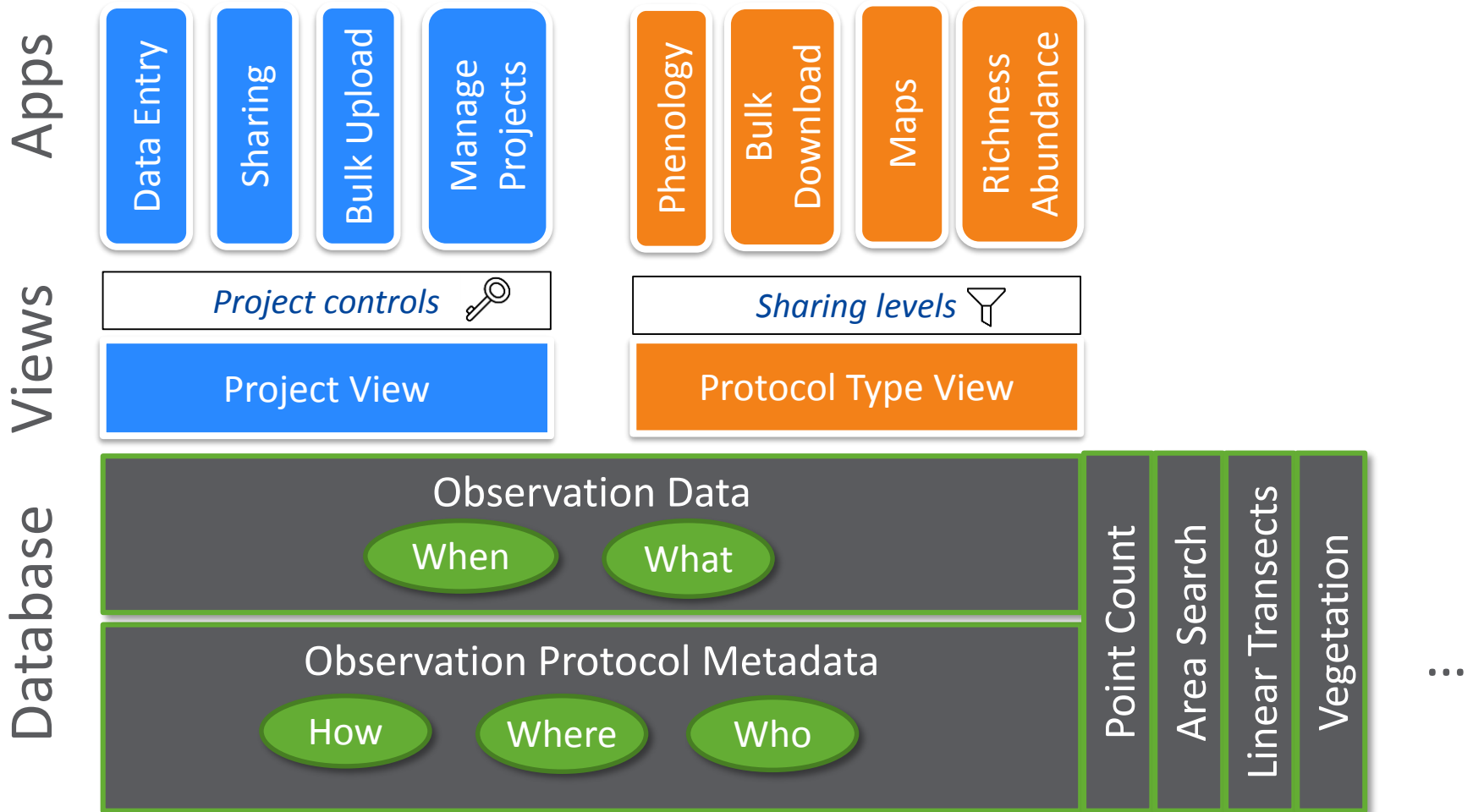
[Like 0](#) [Share](#) [Tweet](#)

[Recent News](#)

[May 2016](#)

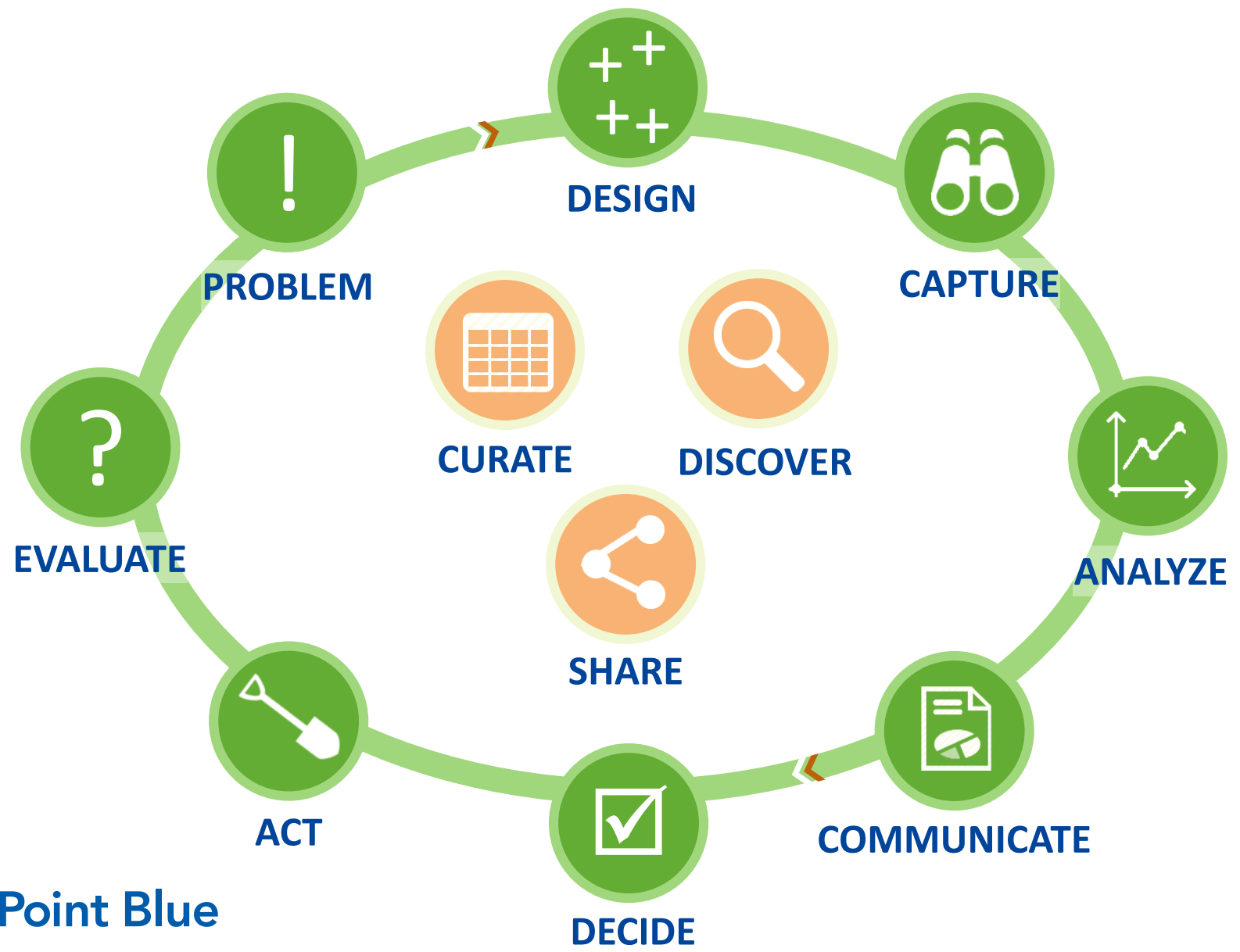


AKN Data & Applications



Data Driven Climate-Smart Conservation

collaborative, iterative learning & understanding at scale



Integrated Waterbird Management and Monitoring (IWMM)



Federal & State refuges
7 years
300K observations
Birds, vegetation &
management actions

www.iwmmprogram.org

Adaptive Management through Bird Counts, Migration Curves, Bird Use Days, Habitat Reports by Mgmt Unit, Site, Refuge, FWS Region, JV Boundary, BCR, Flyway

Generate Reports

Report Type

[Bird Survey](#)
[Unit Conditions](#)
[Bird Use Days](#)
[Vegetation Survey](#)
[Report Output Description](#)

Location

Select a project to include all locations within those projects in the report. Optionally, select locations from the projects selected to include only those locations in the report.

Projects

GREATSWAMPNWR ▾

Bridge Overlook
 Little Pond
 Middle Brook Pool
 Pool 1
 Pool 2
 Pool 3A
 Pool 3B

Protocols

Filter results to show only those matching one or more protocols you select.

All Protocols

Specific Protocols

IWMM_AerialSurvey
 IWMM_FlushCount
 IWMM_GroundAerialSurvey
 IWMM_GroundSurvey

Species

Select one or more species. You may also filter by one or more guilds, and optionally one or more species within those guilds. Species are listed in taxonomical order.

[All Species](#)
[Guilds](#)
[Species](#)

Larids
 Marshbirds (Breeding)
 Marshbirds (Non-breeding)
 Non-waterfowl open-water species
 Shorebirds
 Wading Birds
 Waterfowl

BBPL - Black-bellied Plover
 AMGP - American Golden-Plover
 PAGP - Pacific Golden-Plover
 LGPL - Unid. Lesser or American Golden-F
 SNPL - Snowy Plover
 WIPL - Wilson's Plover
 SEPL - Semipalmated Plover
 PIPL - Piping Plover

Dates

Filter results to show only those within the specified date range.

For Bird Use Days reports, a date range must be provided, and it must reflect the period for which the report is being requested. The time span between the start month/day and the end month/day defines the period used for the report. The period is applied to each year in the date range provided.

Date Range

Start Date

End Date

Apply user defined period

Results Grouping

The results will be grouped according to your selection here

[Units](#)
[Projects](#)
[Guilds](#)

Generate Report

Generate PDF Link

Bird Use Days (unadjusted for area) for MI-7 and Year 2016

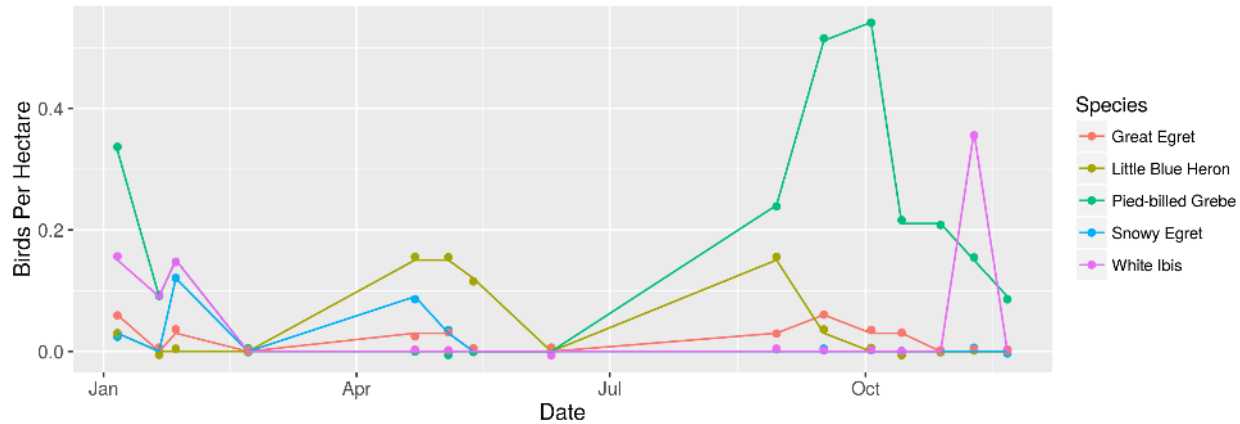
CSV

| Species | Location | StartDate | EndDate | BUD | Corrected_BUD | Variance | LowerLim | UpperLim | Ndays |
|--------------------------|----------|------------|------------|--------|---------------|---------------|-----------|------------|-------|
| American Black Duck | MI-7 | 2016-01-06 | 2016-11-21 | 30 | 74 | 0 | 0 | 0 | 15 |
| American Coot | MI-7 | 2016-01-06 | 2016-11-21 | 9812.5 | 10043.5 | 40669475.6292 | NA | 22542.9343 | 15 |
| American Wigeon | MI-7 | 2016-01-06 | 2016-11-21 | 3892.5 | 4002.5 | 388297.992 | 2781.1542 | 5223.8458 | 15 |
| Blue-winged Teal | MI-7 | 2016-01-06 | 2016-11-21 | 234.5 | 234.5 | 0 | 0 | 0 | 15 |
| Bufflehead | MI-7 | 2016-01-06 | 2016-11-21 | 190.5 | 234.5 | 0 | 0 | 0 | 15 |
| Canada Goose | MI-7 | 2016-01-06 | 2016-11-21 | 5213.5 | 7743.5 | 618055.94 | 6202.6159 | 9284.3841 | 15 |
| Common Gallinule | MI-7 | 2016-01-06 | 2016-11-21 | 46.5 | 46.5 | 0 | 0 | 0 | 15 |
| Double-crested Cormorant | MI-7 | 2016-01-06 | 2016-11-21 | 191.5 | 202.5 | 282955.7429 | NA | 1245.0943 | 15 |
| Dunlin | MI-7 | 2016-01-06 | 2016-11-21 | 55.5 | 55.5 | 0 | 0 | 0 | 15 |
| Eurasian Wigeon | MI-7 | 2016-01-06 | 2016-11-21 | 7.5 | 18.5 | 0 | 0 | 0 | 15 |

Showing 1 to 10 of 41 entries

Previous 1 2 3 4 5 Next

Migration Curve for MI-7 and Starting Year 2016

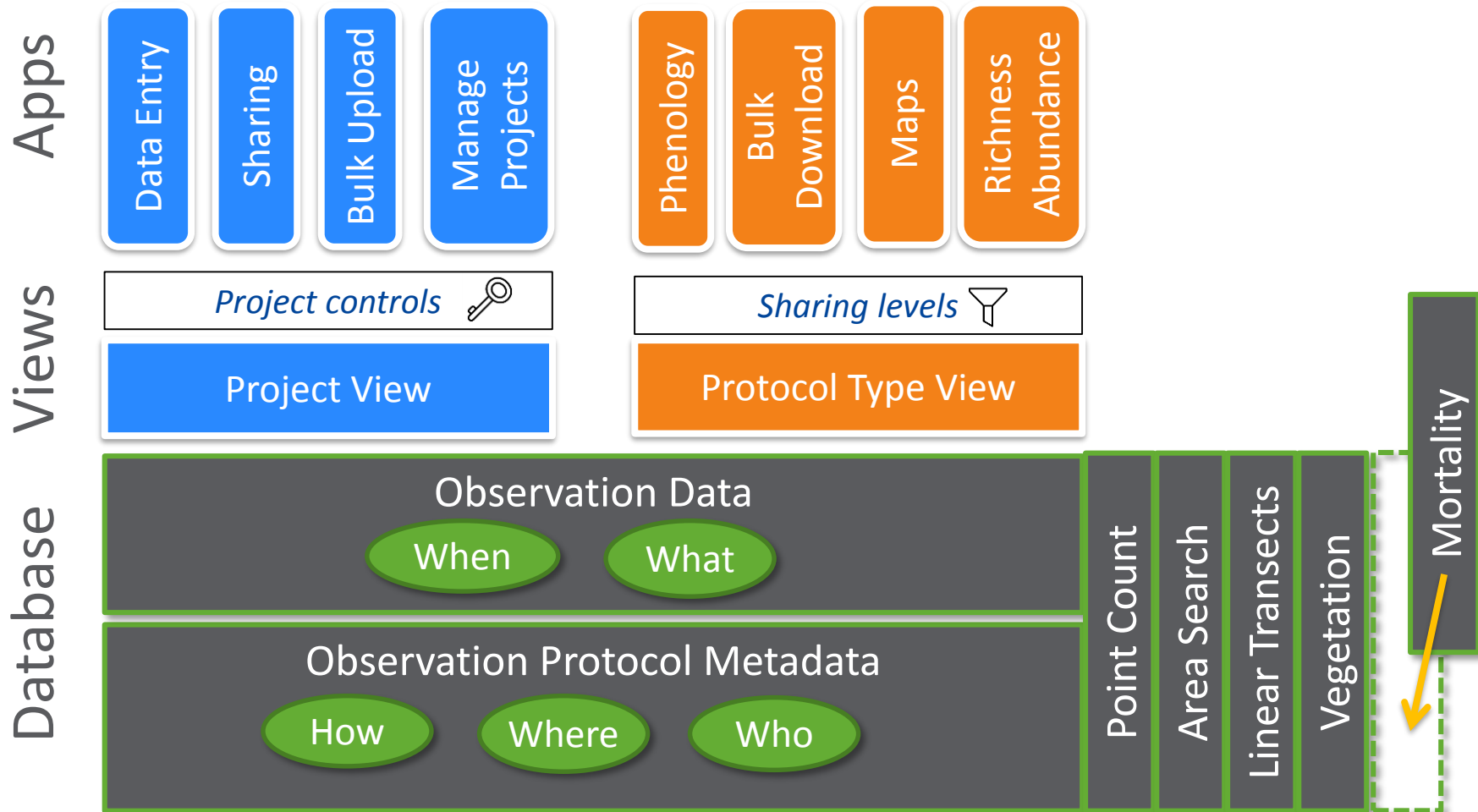


AKN / Avian-Solar CWG/ASWG

Opportunities & Thoughts

- Use our infrastructure to manage & share data
 - Point Count Observations
 - Mortality Data
- Work with other AKN Partners on common conservation goals + learn from their experience
 - eg Sonoran Joint Venture & SW Avian Data Center (aka “Borderlands Node”)
- Take advantage of other data collected in region by other partners
- Utilize our out-of-box analytics
- Provide IWMM-like end-to-end solution

Extending AKN Data & Applications



Some questions for you

- If all the observation data were available in one place, what types of analyses / visualizations do you want to do? What are the steps to do these manually? Do you have examples of these outputs?
- How do you want to share data between organizations? Who owns the data vs. who has the rights to use the data?
- How do you currently manage observation data? Would the AKN systems hold a copy or the official database of record?
- Do you have any standards for protocols?
- What are your data security requirements?
- How much of a turnkey system do you want?

Thank you



Michael Fitzgibbon
Point Blue Conservation Science
Chief Technology Officer
Aug 16, 2017

